



# Wrexham Miners Project

RESOURCE PACK



## Foreword

It has been a pleasure to work in collaboration with the Wrexham Miners' Project on production of this learning resource pack for schools. Staff from across the school have outlined learning opportunities linked to the Curriculum for Wales which can help pupils to learn about the Gresford Mining Disaster and the role of the Miners' Rescue Centre within our Wrexham community.

The activities have been broken down into Early Years, Year 1 and 2, Year 3 and 4 and Year 5 and 6 and deliberate space has been left around each section for teachers to add their own ideas, notes and reflections to make this a truly co-constructed document for the whole of Wrexham.

We plan to regularly review, update and revise the document and therefore would welcome your feedback. Please do share this with the team at the Miners' Rescue Centre from which point we can incorporate this into subsequent versions of the document.

Best wishes,  
Richard

## Miners Rescue Station

Our Miners Rescue Station (MRS) was officially opened in Wrexham on 1st November 1913 as a venue to train selected personnel how to rescue their fellow coalminers from underground accidents. These trained men formed Mines Rescue Teams at each of the numerous coal mines across the whole of the North East Wales Coalfield, which stretched from near Prestatyn in the north, through Wrexham, and as far south as Oswestry.

This physically demanding training continued until 1986, when Bersham Colliery finally closed. The training was in a purpose-built smoke-chamber within the MRS, which simulated the conditions they would likely encounter when called upon. These specialist rescue teams helped during several disasters, including the harrowing 1966 Aberfan Disaster in South Wales and during the local Gresford Colliery Disaster of 1934, which cast a long and dark shadow over the local community, and is still remembered today.

Once the MRS was vacated by the National Coal Board, the local Fire Brigade took it over, before it was eventually abandoned to become derelict and partially demolished. Thankfully, in 2014, George Powell bought the now Listed Building with the intention of saving it from destruction and to develop it as a venue for social use by the local community.

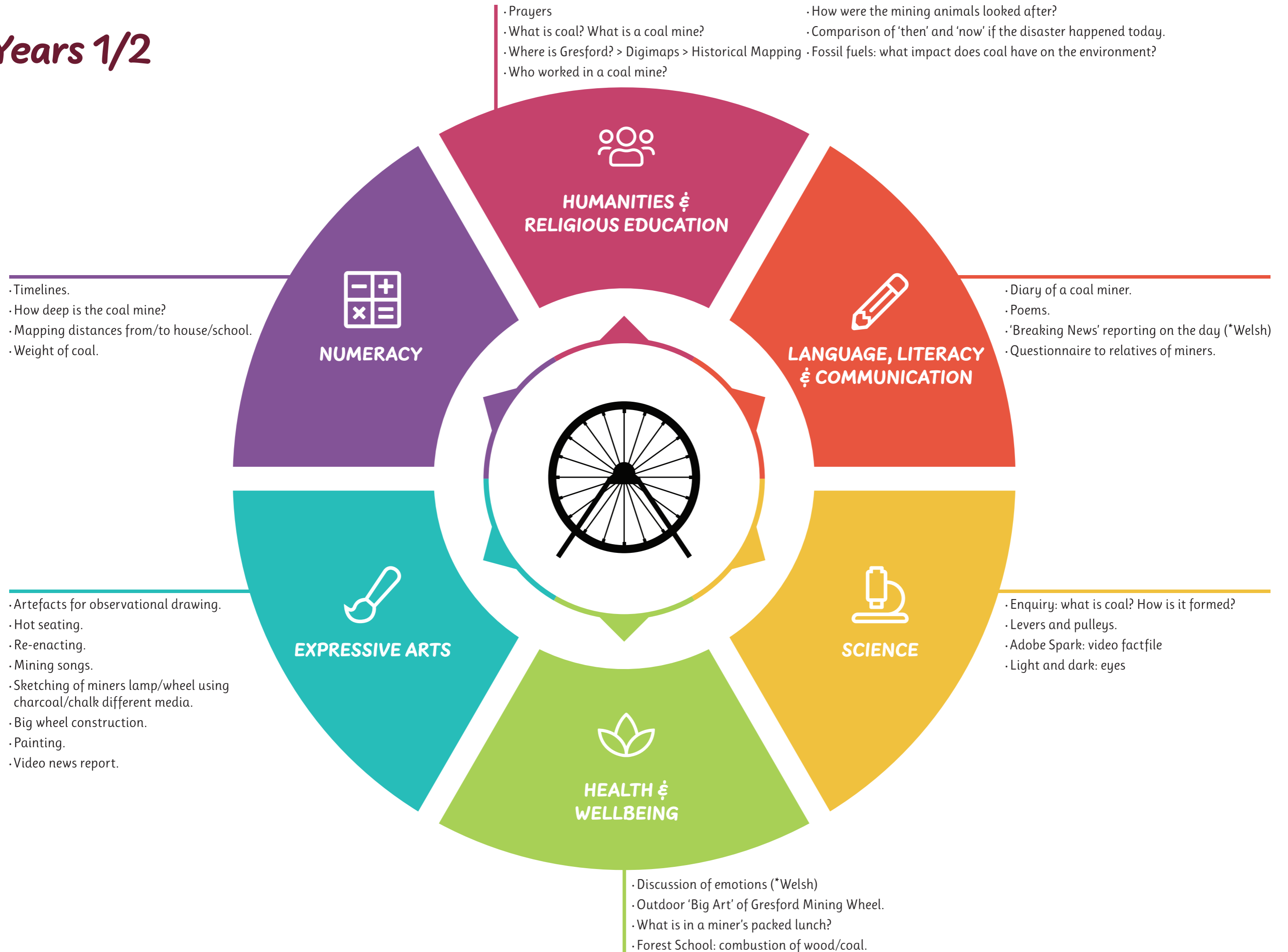
The Wrexham Miners Project is the charitable organisation now responsible for the MRS and for providing its core services and activities from this thriving hub. However, behind its red-brick façade is a building in urgent need of repair and restoration. This project will cost almost £2 million to deliver, and will eventually include the creation of a Coal Mining Museum to showcase the importance of the coal industry in the past and why it has now become essential we significantly reduce the burning of all fossil fuels for the sake of your futures and all those who inhabit planet Earth.

We hope you will revisit the MRS several times as you and it grow, change and develop. Our aim is to create strong memories of the building and an understanding of the importance of the coal mining industry to the region. Hopefully, this will help you understand the conditions and hardships our relatives endured but, more importantly, how they developed strong communal bonds as a consequence of all the challenges they faced.

# Early Years



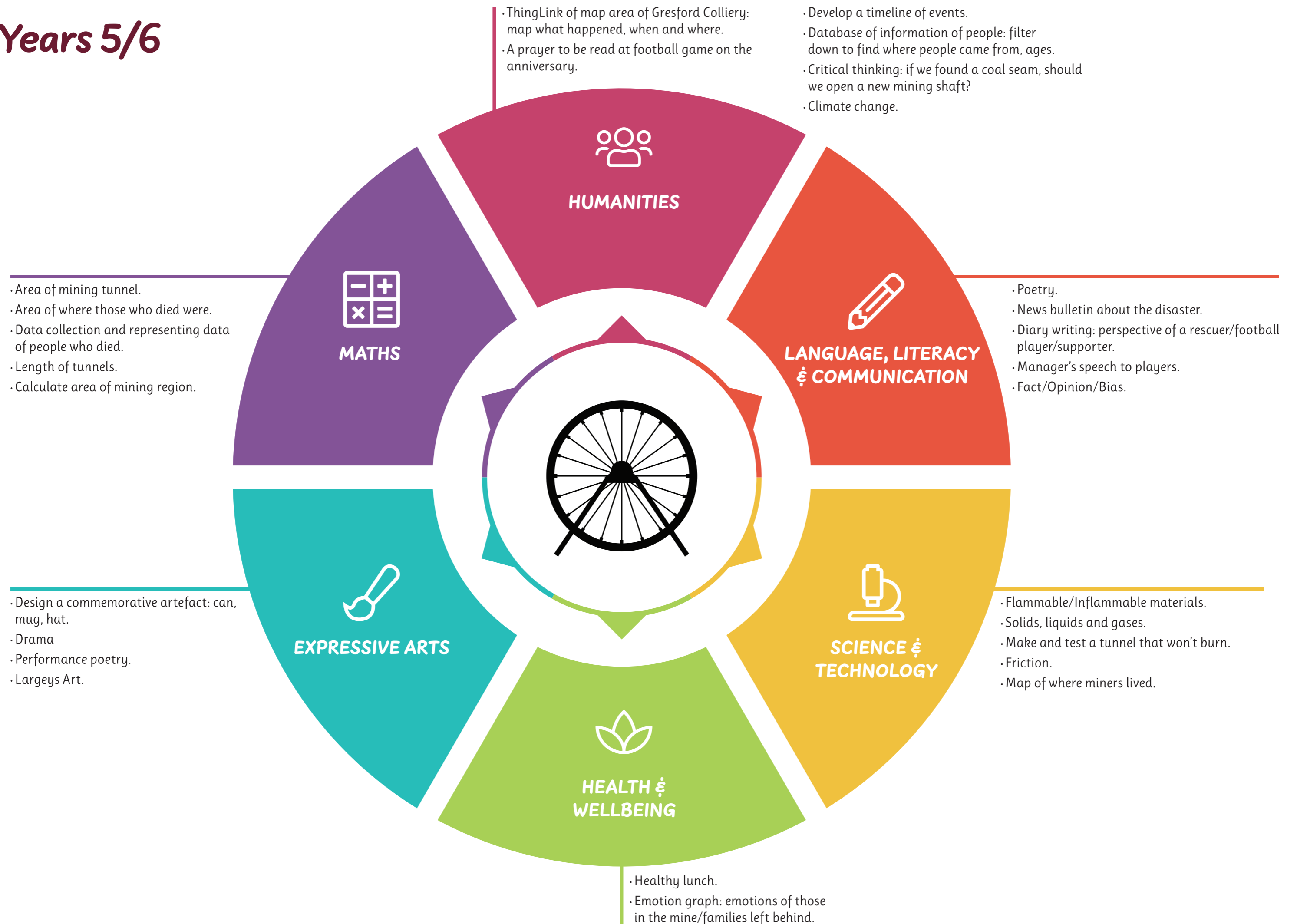
# Years 1/2



# Years 3/4



# Years 5/6



### Wrexham County Borough Council

Head of Education: Mrs Karen Evans  
Lampit Street  
Wrexham  
LL11 1AR  
01978 295400  
education@wrexham.gov.uk

### Diocese of St Asaph

Director of Education: Dr Justine Baldwin  
Diocesan Offices  
St Asaph  
LL17 0TW  
01745 582245  
stasaphoffice@cinw.org.uk

## Ysgol Yr Holl Saint All Saints' School

School Hill, Gresford, Wrexham, LL12 8RW  
01978 852342  
mailbox@allsaints-pri.wrexham.sch.uk  
www.gresfordallsaints.co.uk

